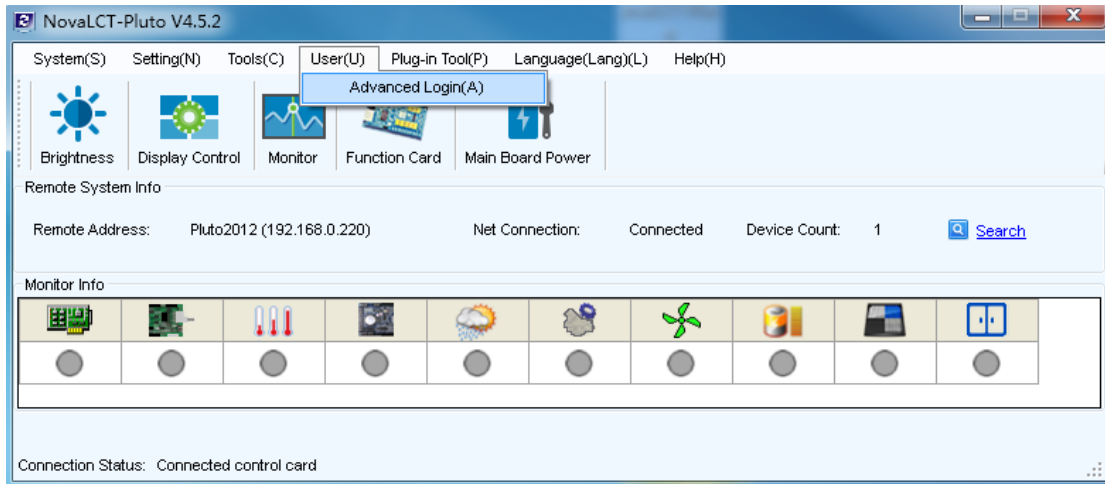
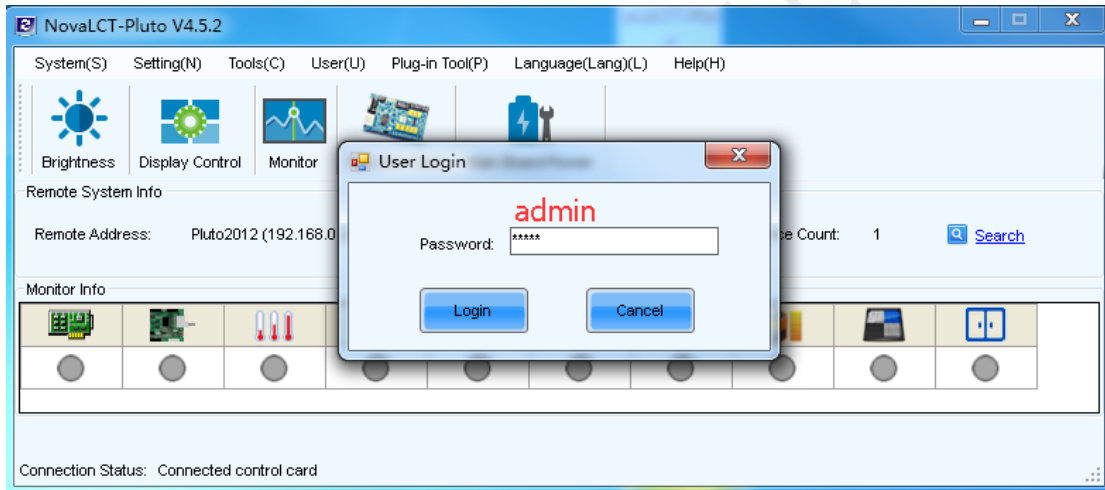


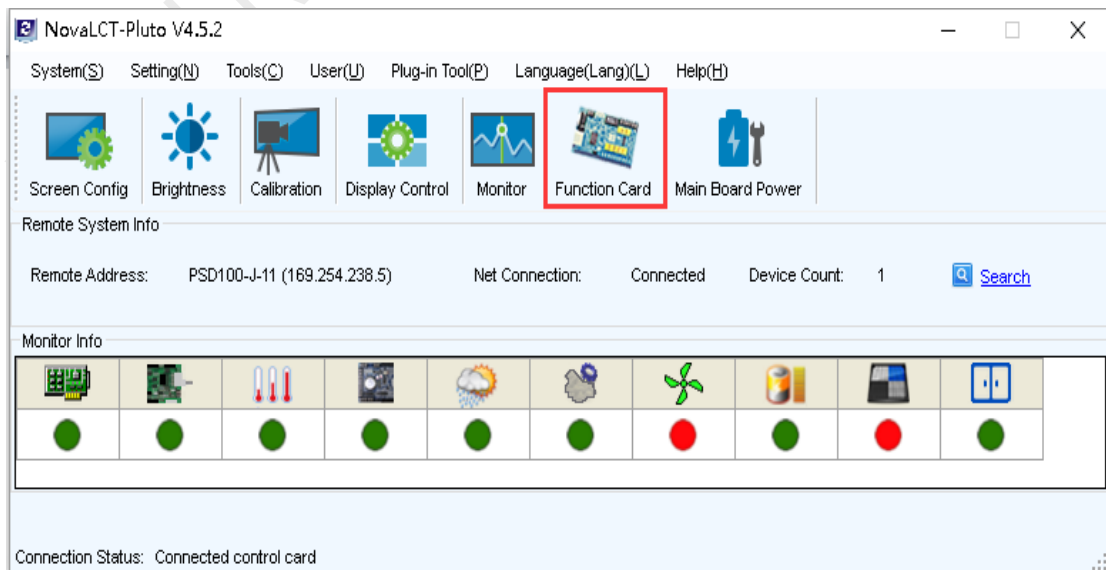
1. Run NovaLCT-Pluto, move the cursor over the *Advanced Login (A)* and click the button.



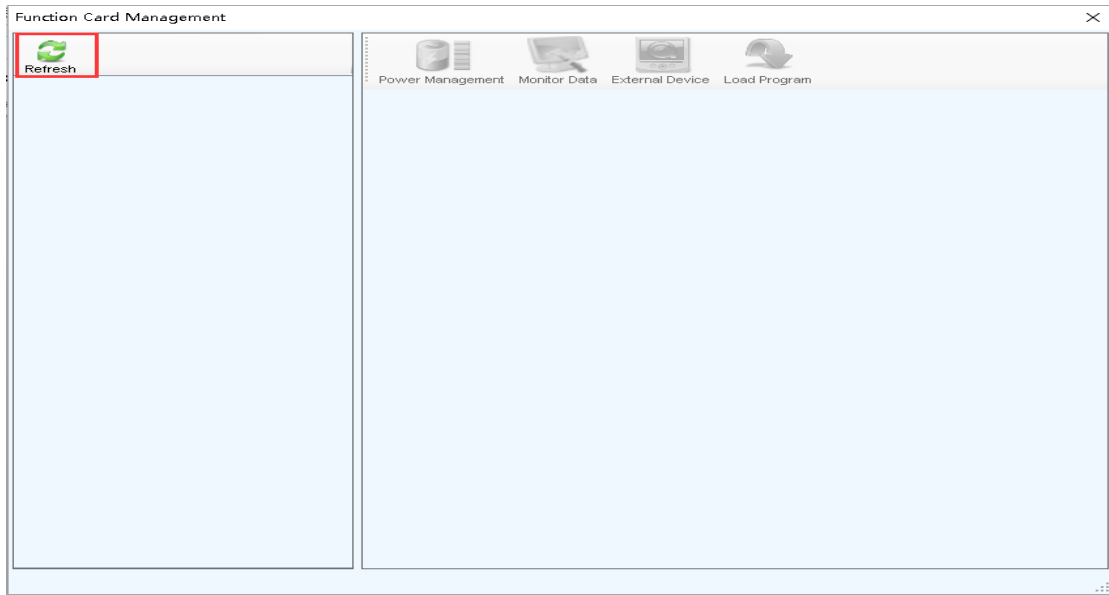
2. Login with the password "admin".



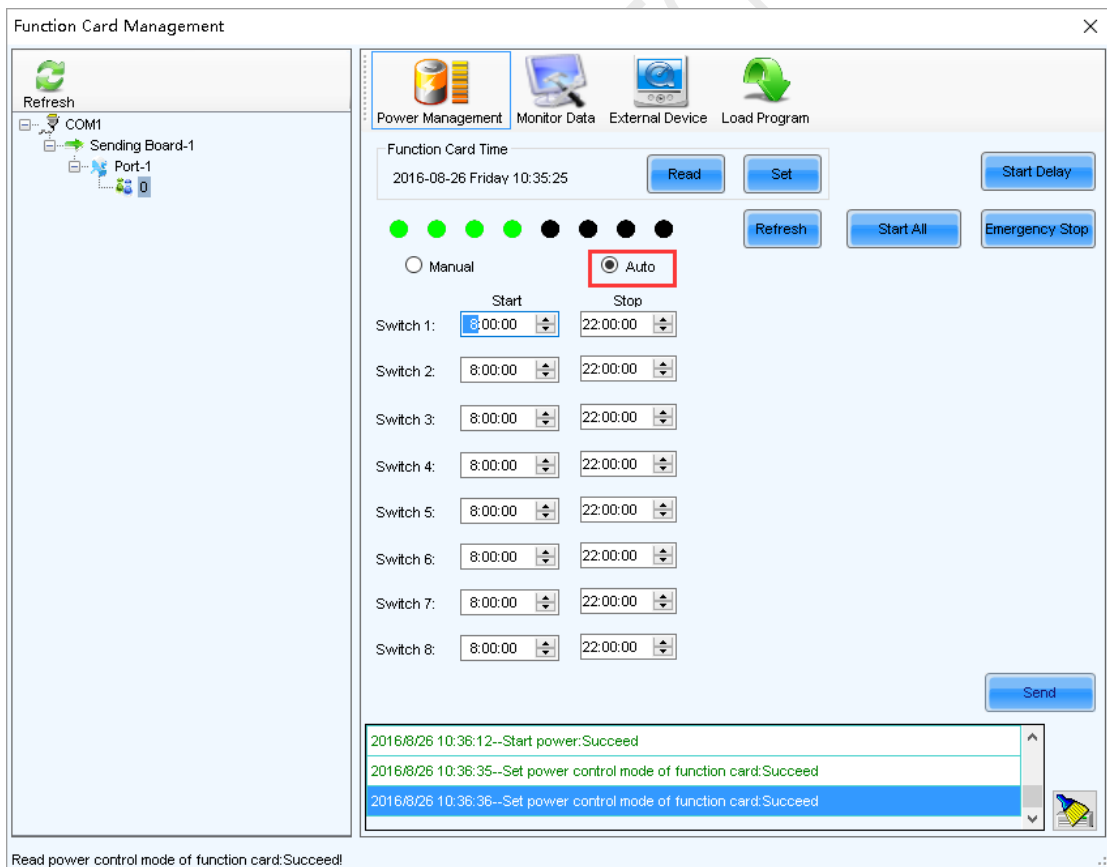
3. Click the *Function Card* button.



4. Check the *Refresh* button.



5. Select a MFN device which you intend to operate , Click *Power Management* icon in right part of the window.



In this window, select *Automatic*, and then could set start/stop time for each power supply. After done the settings, click *Send* to send the settings to particular MFN device.