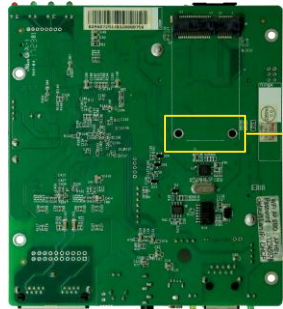


# Taurus Series Multimedia Players

## 4G Module Installation Guide

Note: Please select different installation methods according to the types of the board, as shown in the figures below (here the T3 is taken as an example).

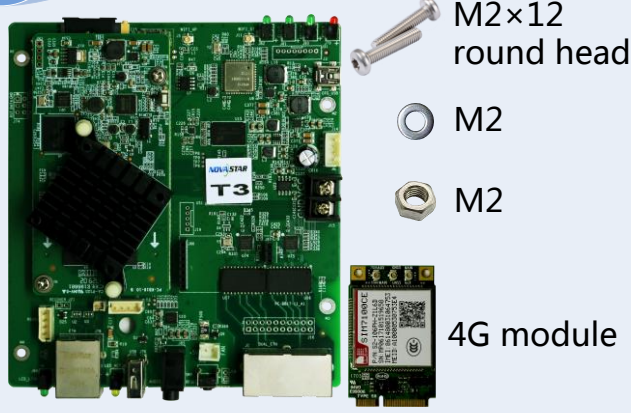
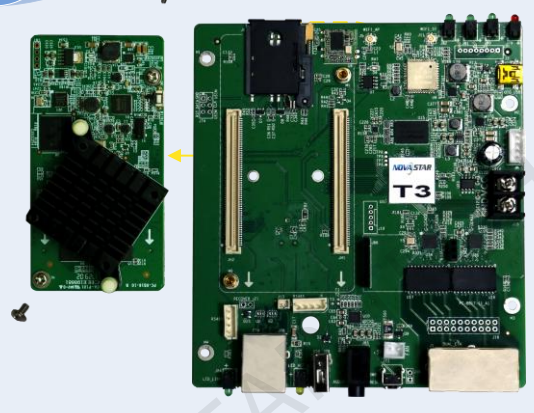
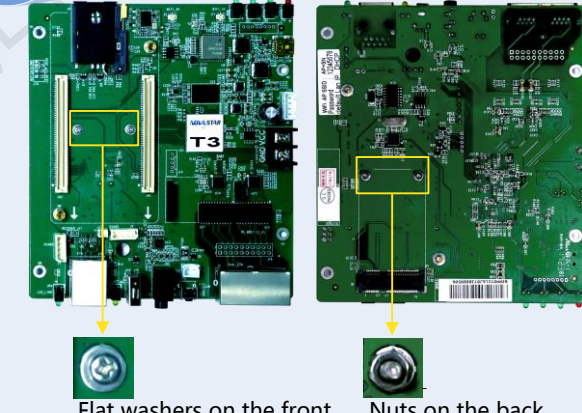

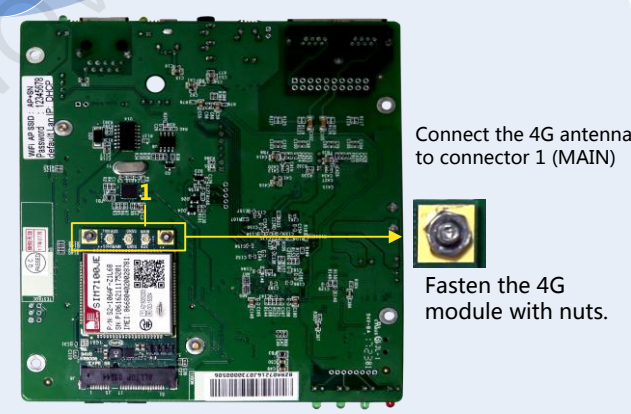



Without welded copper cylinders on the back  
Select installation method 1.

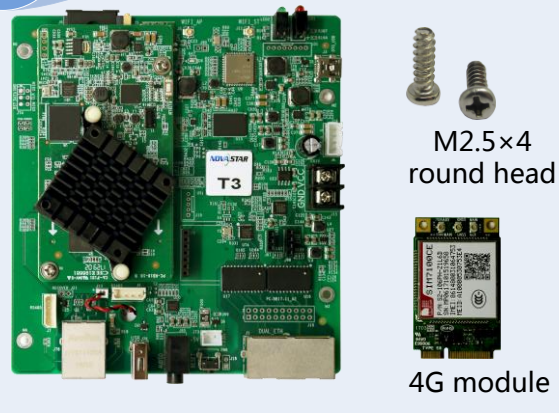



With welded copper cylinders on the back  
Select installation method 2.

### Installation Method 1

- 1 Prepare components.**  
 M2×12 round head  
M2  
M2  
4G module
- 2 Remove the core-board.**  

- 3 Insert and fasten the screws for installing the 4G module.**  
 Flat washers on the front  
Nuts on the back
- 4 Mount the 4G module.**  

- 5 Fasten the 4G module.**  
 Connect the 4G antenna to connector 1 (MAIN)  
Fasten the 4G module with nuts.
- 6 Mount the core-board.**  


### Installation Method 2

- 1 Prepare components.**  
 M2.5×4 round head  
4G module
- 2 Mount the 4G module.**  

- 3 Insert and fasten the screws for installing the 4G module.**  
 Tx model: Connect the 4G antenna to connector 2 (MAIN).  
TBx model: Disconnect the 4G antenna from connector 1 and then connect it to connector 2 (MAIN).  
Fasten the 4G module with screws.