

RGBlink Science &Technology Co.,Ltd			
File name:	XTOOL Upgrade Instuction (For Windows)	File type:	Upgrade Instruction
File num:	RGB-TP-UG201703001	Version:	V1.1
Execute Dept:	Training Dept.	Date:	2017-07-24
Acpt Dept:	■R&D Dept. ■Market Dept. ■Sales Dept. ■Shenzhen ■Product Center		

Document revision / Change record					
Date	Revisor	Vesion	Page	Content	Note
2017.03.15		V1.0	5	Installation Instuction	Tria
2017.07.24	Rainbow	V1.1	8	Icon update	Tria

XT00L Install Instruction(For Windows)

The instruction manual is only suitable for Windows system.

1. XT00L Introduction

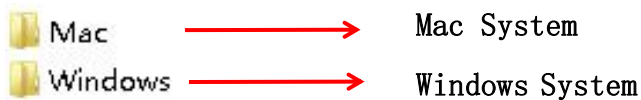
“XT00L” is the new developed products upgrade tool of RGBlink, used for the main products of RGBlink. Every device has different ways for upgrade. XT00L has eliminate the diversity and make the process more smooth.

(1) Divide the main program into many sub-program, users can select the sub-program to upgrade separately.

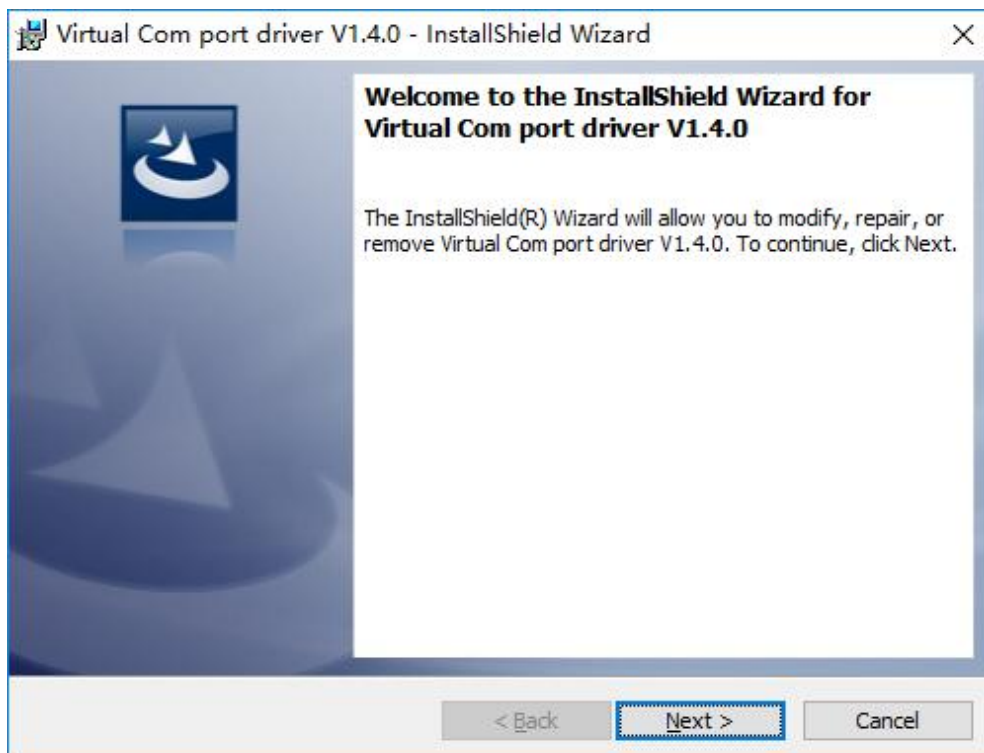
(2) Tool box for edit the OSD, still, logo and effect.

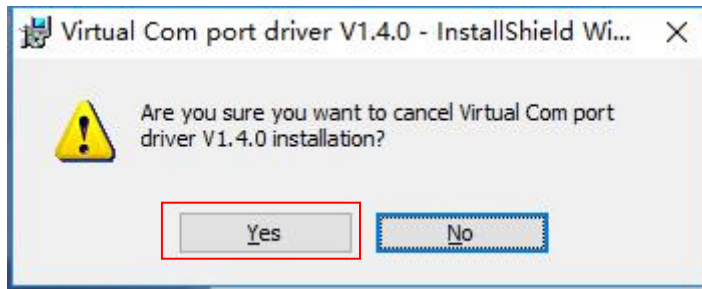
2. Installation instructions

(1) Install the XT00L based on the computer system:



(2) Click ‘Cancel’ if the computer has installed the virtual serial port driver. Click ‘Next’ to procedure Driver update.



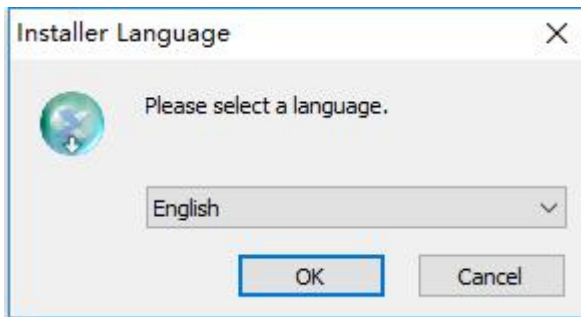


3. XTOOL Install steps are as follows:

Step 1. Right-click program and choose “Run as administrator”.



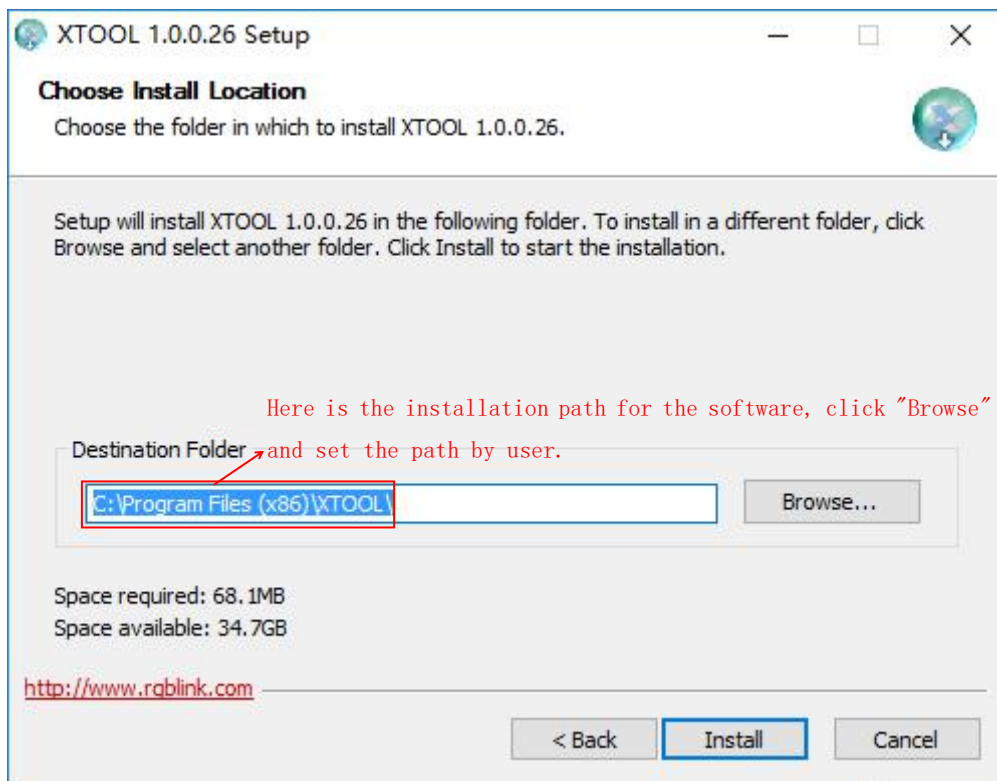
Step 2. Select language and click “ok”:



Step 3. Enter Xtool installation wizard and select “Next”

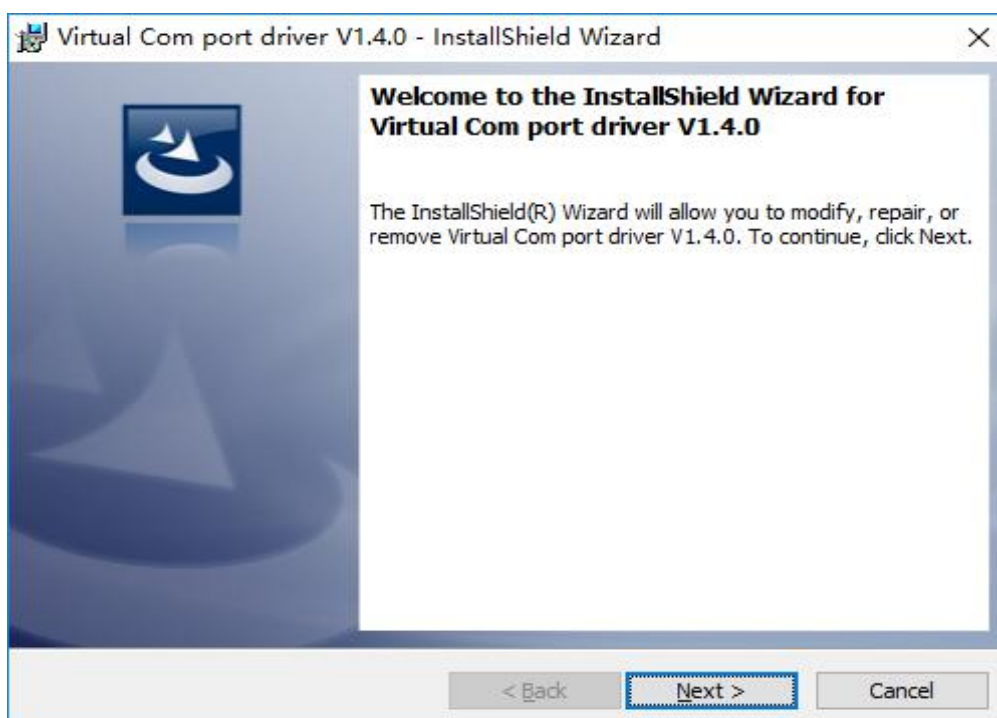


Step 4. Click “Browse” and choose installation path, then click “Install” again to enter next step.

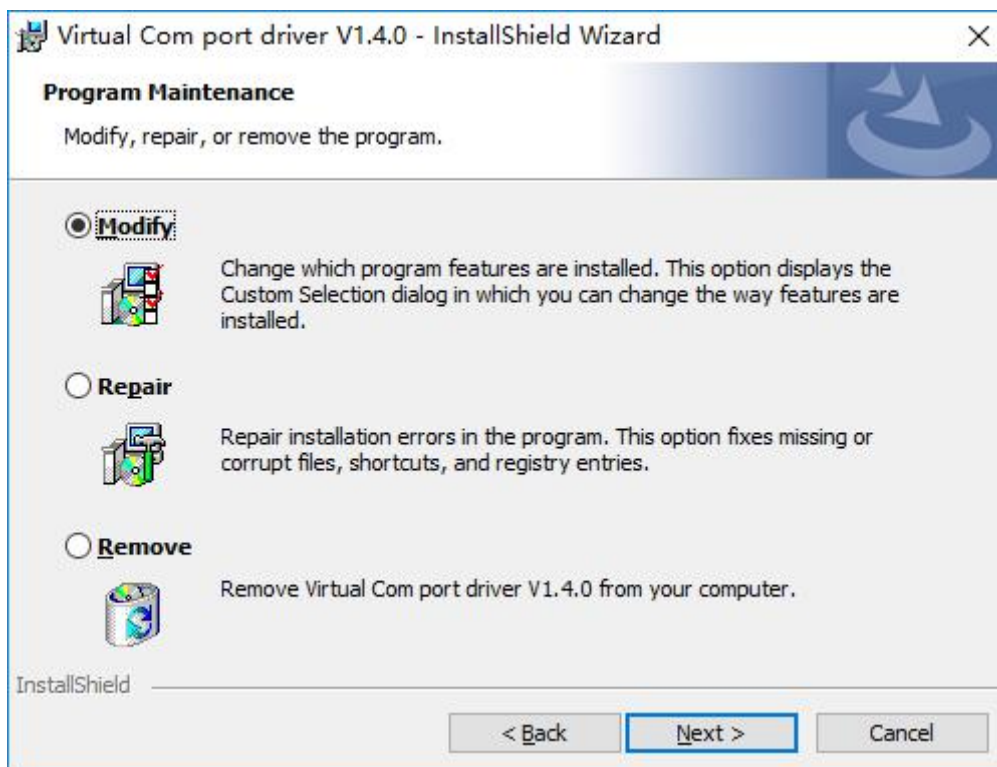


Step 5. Enter Virtual Com port driver and click “Next” :

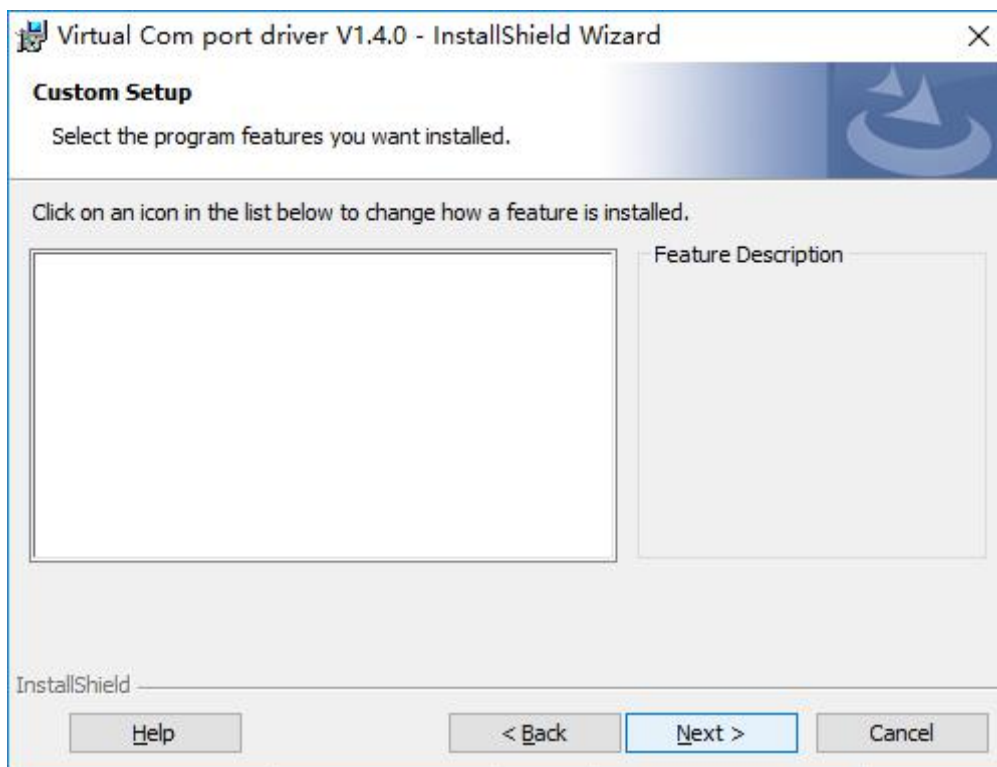
If the computer has installed the virtual serial port driver, click “Cancel” on the current dialog box. In the popup dialog box, select “YES” to cancel the installation of virtual serial port.



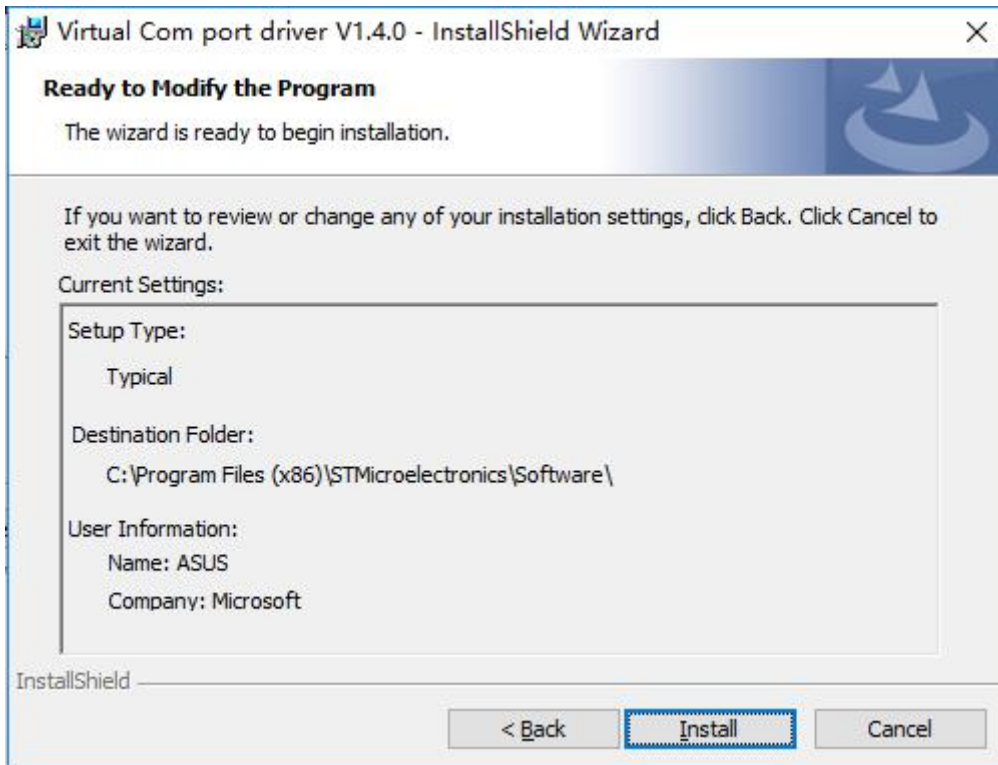
Select “Modify” and click “Next” :



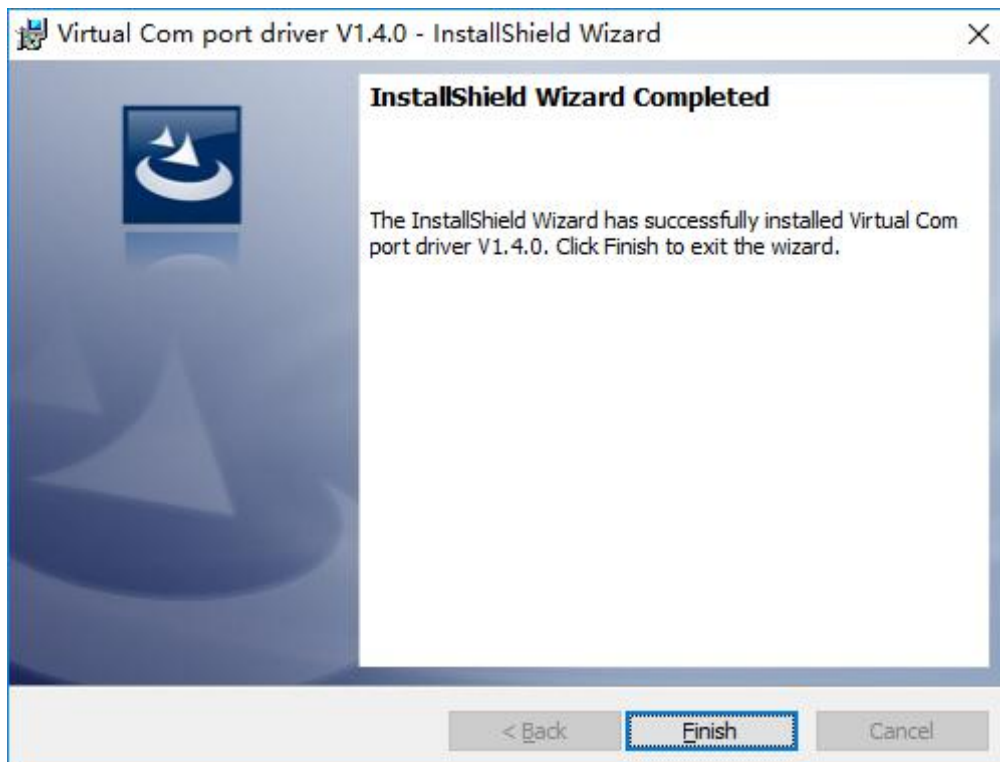
Click “Next” :



Click “Install” :



Step 6. In the popup dialog box, select “Finish” :



Step 7. After you complete XT00L installation, program icon is shown as below:

(PS: Compare with last vision the XT00L icon has changed)

