



## Product specs

### Receiving card R500

V3.0 20170901

## Features

---

1. Receive data from sending / sending box through gigabit network cable:
2. Dual network port automatically identifies the input and output.

## Parameters

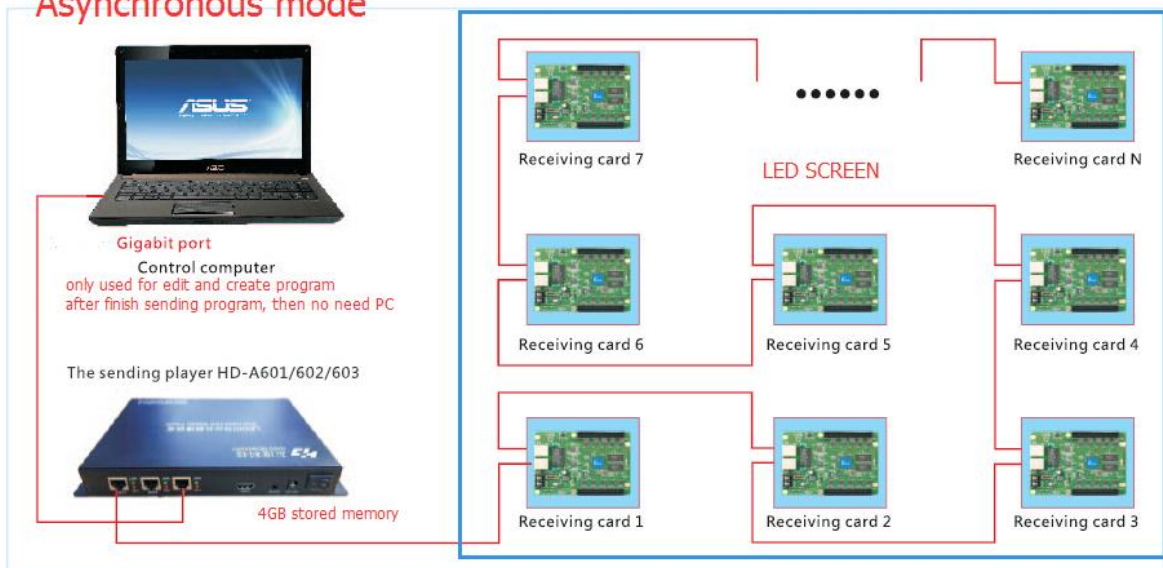
---

<b>Fit for sender</b>	A60X serials player box,A30/A30+,CX0 serials Asyn sending card
<b>Module type</b>	Compatible with indoor and outdoor full color and single color module; Support MBI5041/5042、MBI5050、MY9221、MY9268 etc.PWM IC
<b>Scan mode</b>	Supports any scanning method from static to 1/32 sweep
<b>Communication method</b>	Gigabit Ethernet
<b>Monolithic receiving card loading range</b>	Recommend: 256*256 pixels MAX: 130,000 dots, which is 1024*128 or 256*512
<b>Multi-card connection</b>	Receiving card can be put in any sequence, can be automatically identified by software or manually set the connected position; Nanosecond synchronization between card and card.
<b>Gray scale</b>	0-65536
<b>Smart setting</b>	A few simple steps to complete the smart settings, through the screen layout can be set to go with any alignment of the screen unit board
<b>Play contents</b>	Support play video, animation, pictures, text, tables, PPT, time, timing and so on
<b>Test functions</b>	Receiving card integrated screen test function, by pressing the self-test button to achieve red, green, blue, white, grayscale, slash, grid, etc, a variety of test modes.
<b>Blanking circuit</b>	Support
<b>Communication distance</b>	Super Cat5,Cat6 network cable within 150 meters
<b>Port</b>	2pin 5V Power x1,1000M Ethernet portX2, 50pin HUB port x2

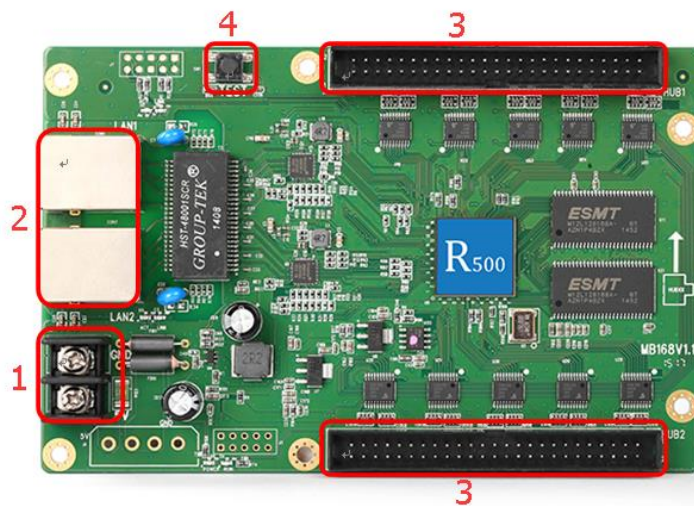
Input voltage	4V-6V
Working temperature	-20°C to 85°C

## Connection method

### Asynchronous mode



## Appearance Description



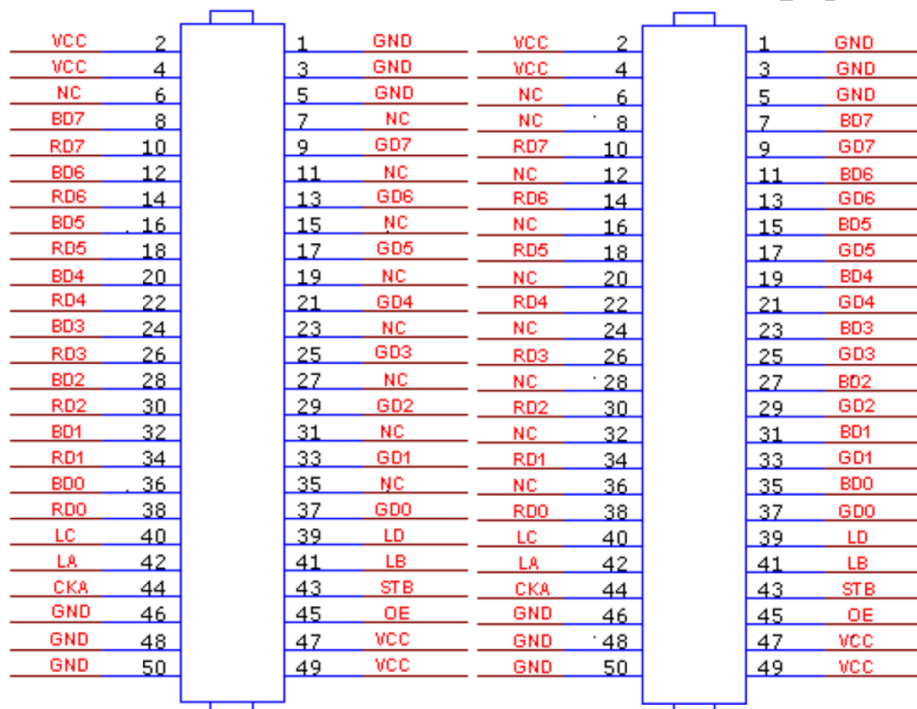
①: Power interface, can be accessed with 4.5V ~ 5.5V voltage;

② : Gigabit Ethernet port, used to connect the player box or another receiving card, the same two network ports are interchangeable;

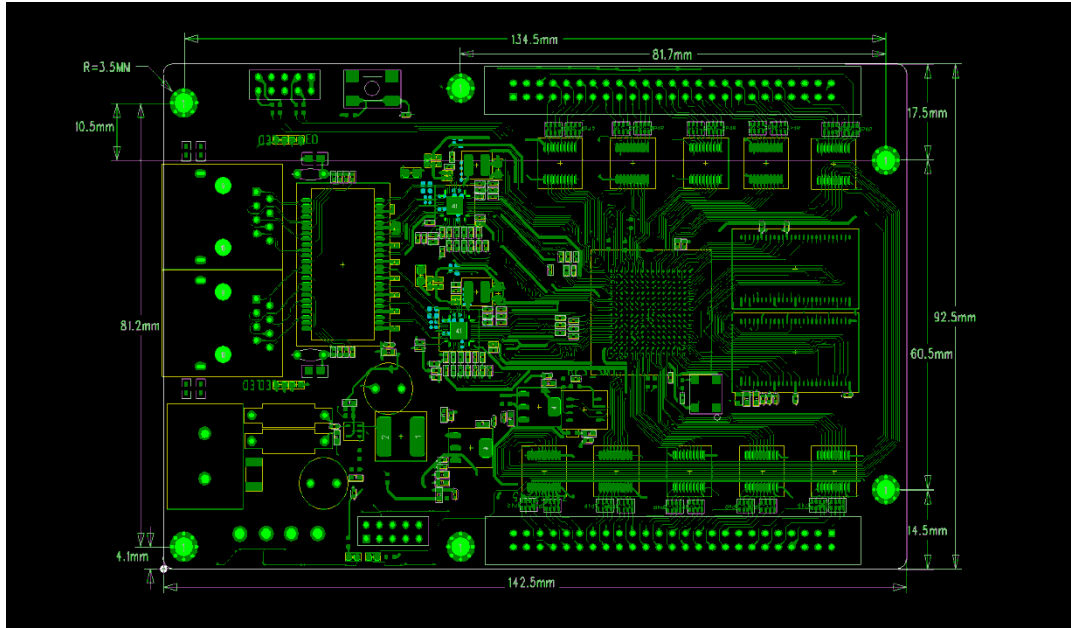
③ : 50PIN pin, used to connect HUB, through the HUB interface with a variety of screen connections. Support "RGRB" parallel data 16 groups.

④ : Test button, after adjusting the screen, once click each time, screen will show followed by red, green, blue, white, slash test;

## Interface definition



## Dimensions



## Technical Parameters

	Minimum	typical	Maximum
Rated voltage)	4.2	5.0	5.5
storage temperature(°C)	-40	25	105
Working ambient temperature(°C)	-40	25	80
Working ambient humidity(%)	0.0	30	95

## Precautions

- 1) ensure the system long-term stable running, please keep to use the standard 5V power supply voltage.