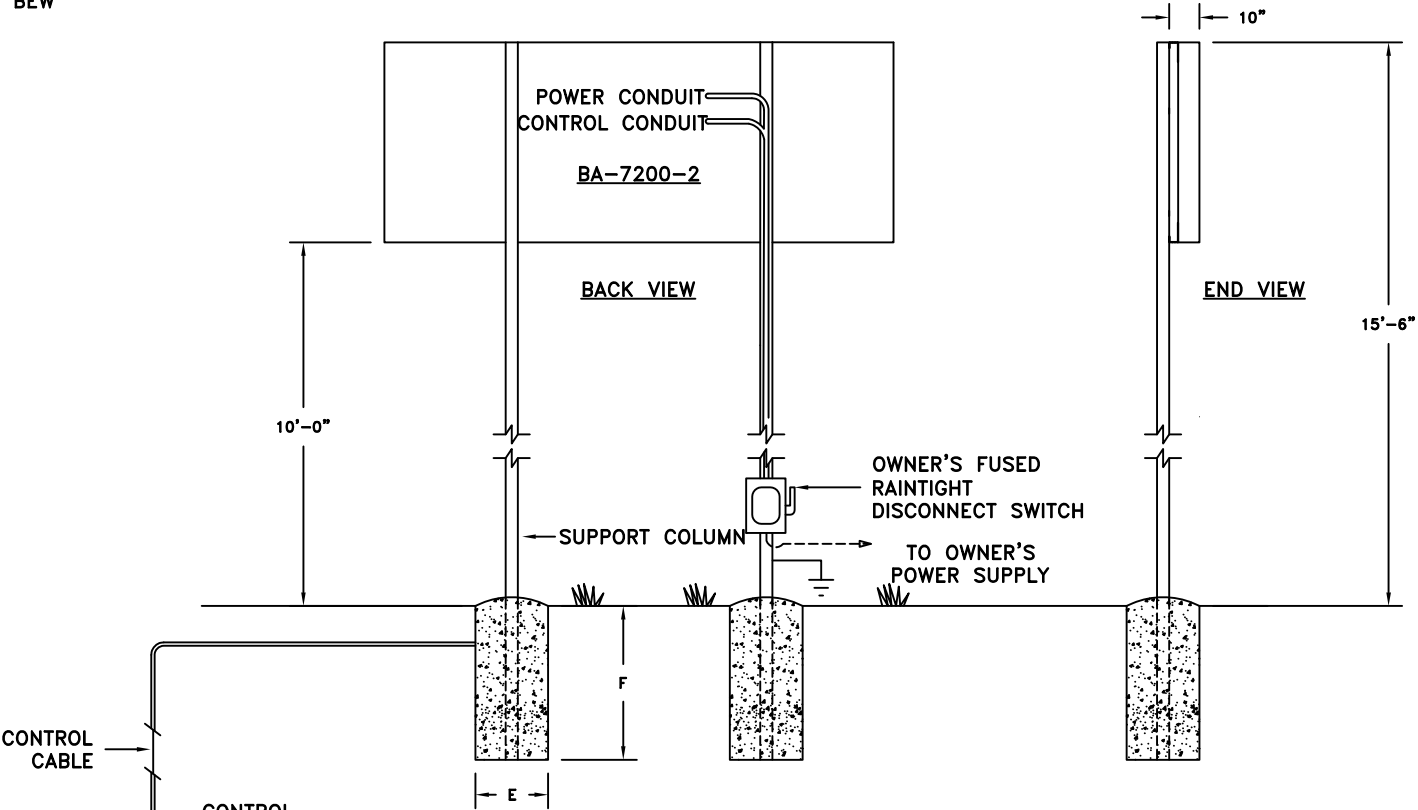


REV.#	CHANGE	DATE	BY
A	CHANGED WIND SPEED TO 80 MPH	3/17/04	WJG
B	GENERAL UPDATES	04/21/09	RMS



NOTE: IF WIRELESS IS ORDERED, 2 CDR CABLE & CONDUIT NOT REQ'D.

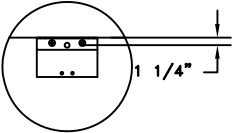
COLUMNS AND FOOTINGS SHOWN HERE, PROVIDED BY OTHERS, ARE SIZED TO COMPLY WITH IBC 2006 90 MPH EXPOSURE B REQUIREMENTS. THE MANUFACTURED PRODUCT EXCEEDS THE REQUIREMENTS OF IBC 2006 90 MPH EXPOSURE B AS MOUNTED IN THIS DRAWING. SOIL- AVERAGE WITH ALLOWABLE STRESSES OF 2500 psf. DESIGN SHOULD BE ALTERED FOR DIFFERENT SOIL CONDITIONS, CLEARANCE, OR LOCAL CODES. FAIR-PLAY ASSUMES NO RESPONSIBILITIES FOR INSTALLATIONS DONE BY OTHERS.

CONTROL CABLES- SUGGEST 3/4" CONDUIT BE USED FOR BURIED CABLE IN AREAS WHERE IT MAY BE SUBJECT TO MECHANICAL DAMAGE. POWER WIRES SHOULD BE ROUTED IN SEPARATE CONDUIT FROM CONTROL CABLE.

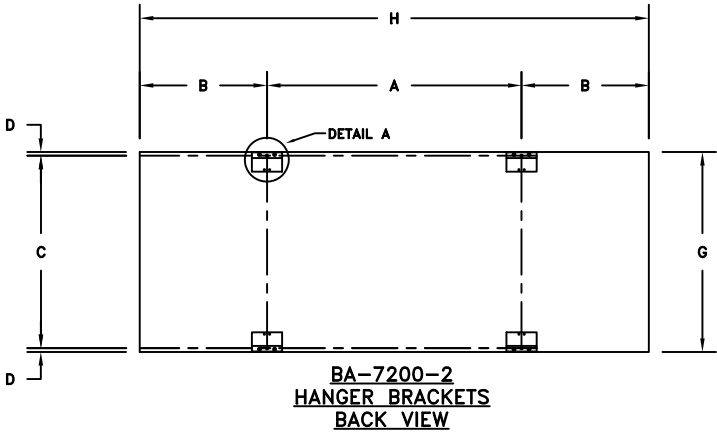
INSTALLATION DRAWING SHOULD BE REVIEWED BY A LICENSED PROFESSIONAL ENGINEER IN YOUR AREA PRIOR TO CONSTRUCTION.

REFERENCE 01-0500-01 FOR INSTALLATION NOTES.

DETAIL A  
(2X SCALE)



STANDARD J BRACKET



BA-7200-2  
HANGER BRACKETS  
BACK VIEW

DIMENSIONS BA-7200-2

A	B	C	D	E	F	G	H	COLUMNS	POWER
7'-0"	3'-6"	5'-3 1/2"	1 1/4"	2'-6"	7'-0"	5'-6"	14'-0"	W8 X 18	REFERENCE 01-7200-26-1