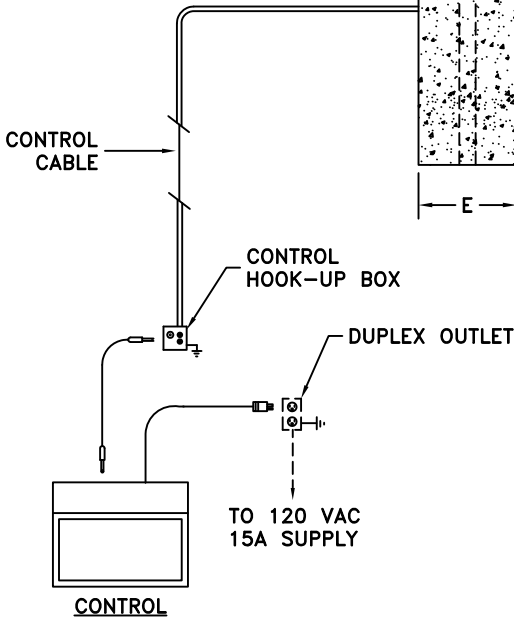
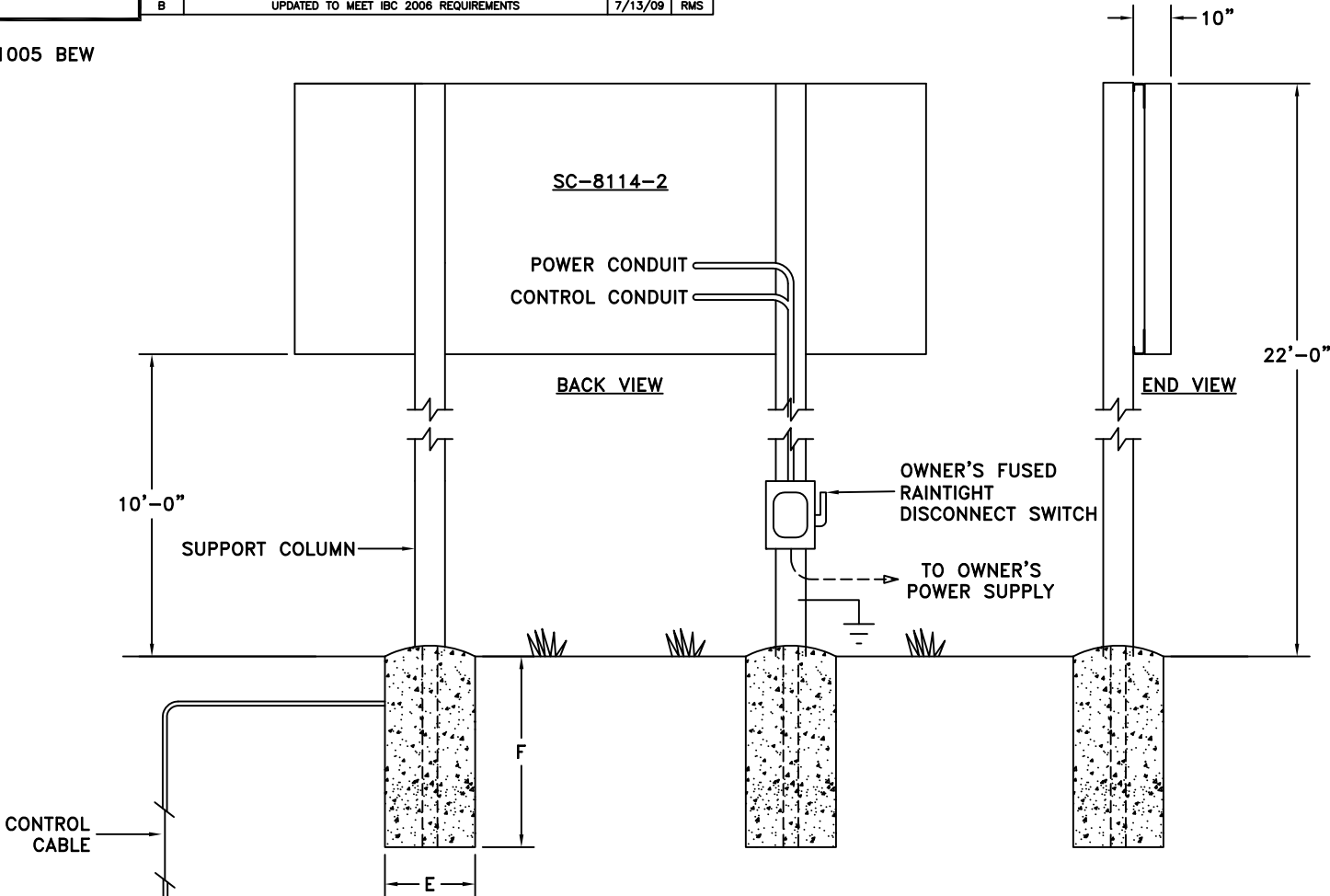


REV.#	CHANGE	DATE	BY
A	UPDATED HANGERS AND SCOREBOARD SIZE	10/31/08	DMS
B	UPDATED TO MEET IBC 2006 REQUIREMENTS	7/13/09	RMS

111005 BEW



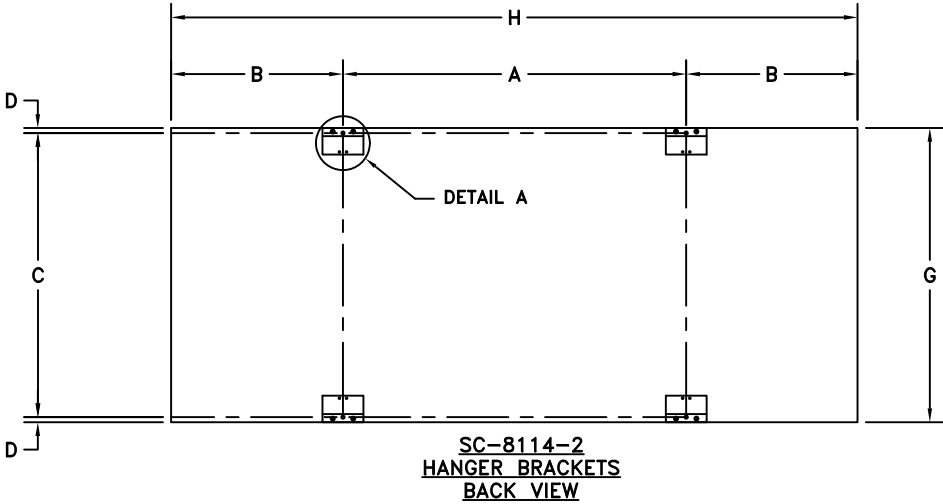
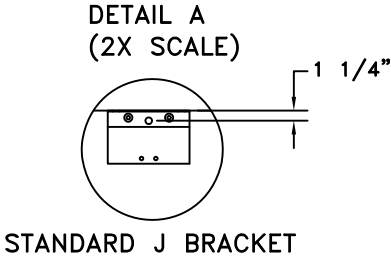
COLUMNS AND FOOTINGS SHOWN HERE, PROVIDED BY OTHERS, ARE SIZED TO COMPLY WITH IBC 2006 90 MPH EXPOSURE B REQUIREMENTS. THE MANUFACTURED PRODUCT EXCEEDS THE REQUIREMENTS OF IBC 2006 90 MPH EXPOSURE B AS MOUNTED HERE. DESIGN SHOULD BE ALTERED FOR DIFFERENT SOIL CONDITIONS, CLEARANCE, OR LOCAL CODES. FAIR-PLAY ASSUMES NO RESPONSIBILITIES FOR INSTALLATIONS DONE BY OTHERS.

CONTROL CABLES- SUGGEST 1/2" CONDUIT BE USED FOR BURIED CABLE IN AREAS WHERE IT MAY BE SUBJECT TO MECHANICAL DAMAGE. POWER WIRES SHOULD BE ROUTED IN SEPARATE CONDUIT FROM CONTROL CABLE.

INSTALLATION DRAWING SHOULD BE REVIEWED AND APPROVED BY A LICENSED PROFESSIONAL ENGINEER IN YOUR AREA PRIOR TO CONSTRUCTION.

\* REFERENCE 01-0500-01 FOR INSTALLATION NOTES.

NOTE: IF WIRELESS IS ORDERED, 2 CDR CABLE & CONDUIT NOT REQ'D.



DIMENSIONS SC-8114-2

A	B	C	D	E	F	G	H	COLUMNS	POWER
7'-0"	3'-6"	5'-9 1/2"	1 1/4"	2'-6"	7'-0"	6'-0"	14'-0"	W8 X 18	REFERENCE 01-8114-19-1