



## AirLink® Management Service

### Configure, Deploy and Remotely Manage your fleet of AirLink Routers and Gateways

#### CONFIGURABLE OPTIONS

- Customize reporting for low or high bandwidth environments
- Schedule periodic reports on any software parameter
- Configure security/networking settings for VPN tunneling, port forwarding and routing
- Setup alerts for mission critical applications and export historical data
- Initiate GPS/Automatic Vehicle Location (AVL) tracking protocols
- Configure I/O settings for communicating with attached assets including legacy industrial equipment

AirLink® Management Service (ALMS) powered by AirVantage® is an application that makes it easy to manage thousands of routers and gateways. Users can remotely configure, deploy, and monitor their AirLink gateways and routers over-the-air. Access to ALMS is included with AirLink Complete management and support plan.

#### POWERFUL MONITORING

Configurable monitoring dashboards display the actionable information required to keep your fleet of AirLink gateways and routers up and running at maximum efficiency. Alerts notify you of mission critical events so that preventative maintenance can be applied to prevent downtime.

#### SOFTWARE UPDATES

Application software, gateway router firmware and radio module firmware can be updated across the fleet, over-the-air with automatic retry and detailed results reporting. The upgrade status dashboard widget provides an overview of all devices' firmware state.

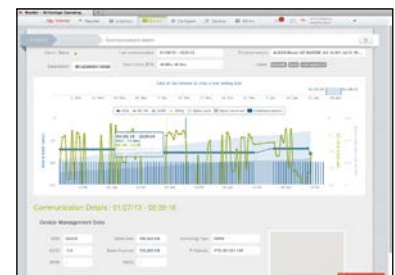
#### SCALABLE DEPLOYMENTS

ALMS enables rapid deployment of AirLink gateways and routers by applying a configuration template to a group of gateways. Configuration templates can be created or modified based on the software parameters of an existing gateway or from scratch.

#### DASHBOARD VIEW



#### HISTORICAL DEVICE VIEW



## A Simple, Scalable, and Secure Approach to Managing AirLink Gateways and Routers

### LEVERAGING THE SECURITY OF AMAZON WEB SERVICES

ALMS is hosted on Amazon Web Services, providing the highest level of security and availability. ALMS provides data residency in the US and the EU, allowing customers a choice of where their data is securely hosted. ALMS retains device management data for 90 days.

# AirLink<sup>®</sup>

## Management Service

Users can start managing their gateways immediately and automatically receive regular updates and new features without having to manage any software. AirLink Management Service is designed to:

### SIMPLIFY OPERATIONS

- Remotely manage AirLink gateways and routers from one central web application accessible anytime, anywhere
- Receive software updates automatically and deploy them over-the-air with one click

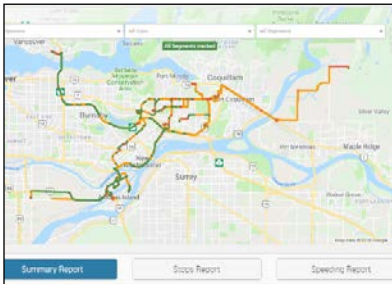
### SCALE DEPLOYMENTS

- Rapidly deploy or update any number of gateways and routers using configuration templates
- Access summary dashboards that provide at-a-glance monitoring of entire deployments with drill down capability for quick troubleshooting

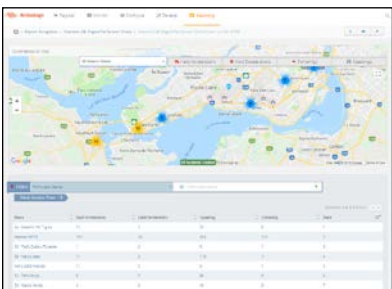
### SECURE YOUR DATA AND COMMUNICATION

- Safeguard AirLink gateways from intrusion with device initiated communication
- Operates seamlessly with operator private networks
- Access service from globally distributed, independently audited, Tier 4 data centers hosted by Amazon Web Services

HISTORICAL TRIP REPORT (SPEED)



HISTORICAL TRIP REPORT (NETWORK STATUS)



## Gain Deeper Insight into your vehicle fleet with ALMS Advanced Reporting and Analytics (ARA)

ALMS Advanced Reporting and Analytics (ARA) has all the same powerful core capabilities in ALMS but adds advanced historical reporting capabilities through a series of pre-defined reports that provide insight into a range of vehicle telemetry data from AirLink Routers and Gateways. ALMS ARA is available at an additional monthly cost for all ALMS users. See the [ALMS ARA datasheet](#) for more details. Key features include:

- Historical Reporting: Trips, Driver Behavior, Vehicle, Vehicle Utilization, Engine Fault reports
- Zones: Use geofencing to generate reports specific to a user-defined geographic zone
- Extended Data Retention: provides up to 12 months of data retention for deeper historical analysis
- Unlimited User and Admin Accounts – supports unlimited number of ALMS admins and users

## ALMS AND ALMS ARA COMPARISON

	<b>AirLink<sup>®</sup></b> Management Service	<b>AirLink<sup>®</sup>   ARA</b> Management Service
Device & Configuration Management	Yes	Yes
Remote Firmware Updates	Yes	Yes
Dashboards and Widgets	Yes	Yes
Real-Time Alerts	Yes	Yes
API Access	Yes	Yes
Historical Reports	No	Yes
Geofencing (Zones)	No	Yes
Extended Data Frequency	No	Yes
ALMS Users	Up to 10	Unlimited
Data Retention	Up to 3 months	Up to 12 months

## AirLink Network Management in the Enterprise Data Center

For customers that are not able to leverage cloud-based solutions, Sierra Wireless provides a series of network management solutions similar to ALMS and ALMS ARA —AirLink Manager (AM) and AirLink Mobility Manager (AMM)—that can manage any Sierra Wireless gateway and can be hosted in the enterprise data center. The AM or AMM provides the ability to deploy, configure and remotely manage any Sierra Wireless router or gateway.

Visit [sierrawireless.com/AMM](http://sierrawireless.com/AMM) for more information on the AM/AMM

### About Sierra Wireless

Sierra Wireless (NASDAQ: SWIR) (TSX: SW) is an IoT pioneer, empowering businesses and industries to transform and thrive in the connected economy. Customers Start with Sierra because we offer a device-to-cloud solution, comprised of embedded and networking solutions seamlessly integrated with our IoT services. OEMs and enterprises worldwide rely on our expertise in delivering fully integrated solutions to reduce complexity, turn data into intelligence and get their connected products and services to market faster. Sierra Wireless has more than 1,400 employees globally and operates R&D centers in North America, Europe and Asia.

For more information, visit [www.sierrawireless.com](http://www.sierrawireless.com).