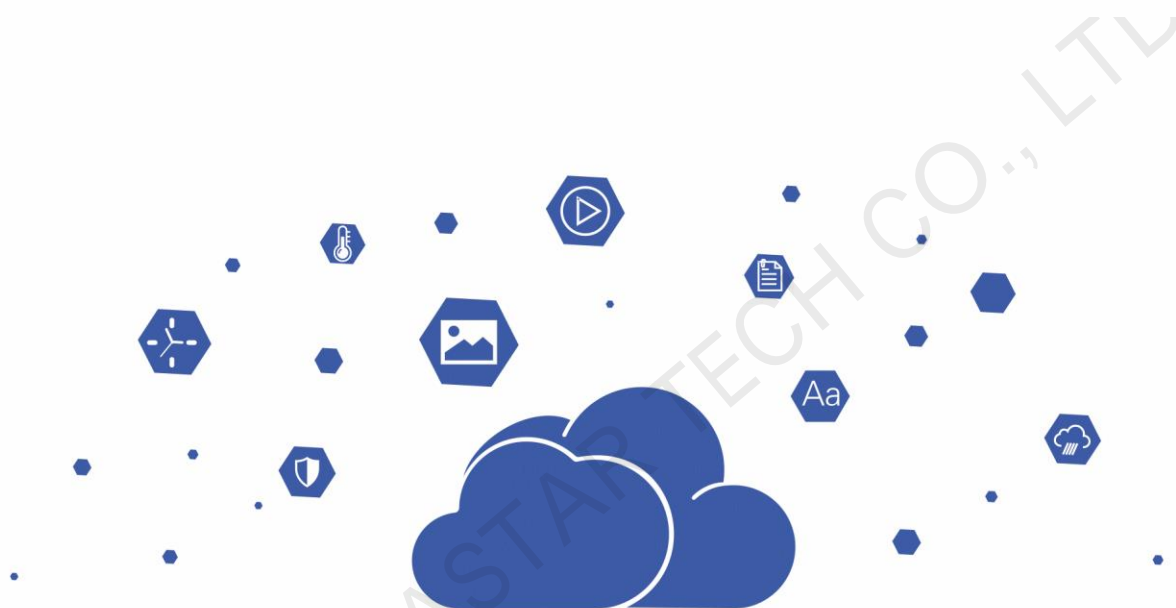


# LCB2K LCD Multimedia Player



Specifications

## Change History

Document Version	Release Date	Description
V1.0.0	TBD	First release

## Introduction

The LCB2K is an LCD multimedia player created by NovaStar. This multimedia player applies to LCD screens in advertising media, digital signage, commercial display and other fields.

## Certifications

None

**If the product does not have the relevant certifications required by the countries or regions where it is to be sold, please contact NovaStar to confirm or address the problem. Otherwise, the customer shall be responsible for the legal risks caused or NovaStar has the right to claim compensation.**

## Features

### Output

- 1x HDMI connector
- 1x Stereo audio connector

The audio sample rate of the internal source is fixed at 48 kHz.

### Control

- 1x USB 3.0 (Type A) port  
Allows for playback of content imported from a USB drive and firmware upgrade over USB.
- 1x USB (Type C) port  
Connects to the control computer for solution publishing and screen control.
- 1x Fast Ethernet port  
Connects the control computer to the device, or connects to a LAN or public network for solution publishing and screen control.

### Performance

- Powerful processing capacity
  - Quad-core processor @1.3 GHz
  - Support for decoding of 4K videos
  - 1 GB of RAM
  - 16 GB of internal storage
- Flawless playback  
Playback of 1x 4K video, 2x 1080p videos, 4x 720p videos

### Functionality

- All-round control plans
  - Enables users to publish content and control screens from a computer, mobile phone, or tablet.
  - Allows users to publish content and control screens from anywhere, anytime.

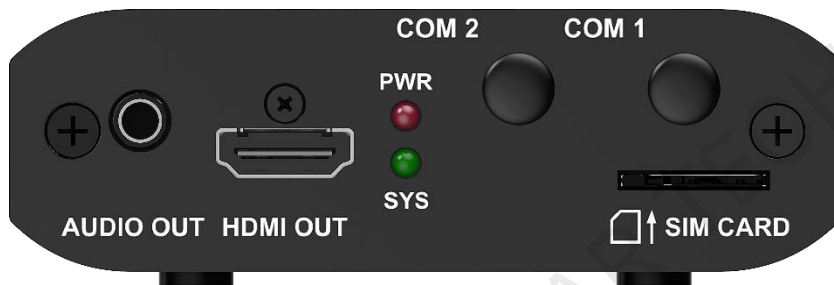
- Allows users to monitor screens from anywhere, anytime.
- Switching between Wi-Fi AP and Wi-Fi STA
  - In Wi-Fi AP mode, the user terminal connects to the built-in Wi-Fi hotspot of the LCB2K. The default SSID is “AP+Last 8 digits of SN” and the default password is “12345678”.
  - In Wi-Fi STA mode, the user terminal and the LCB2K are connected to the Wi-Fi hotspot of a router.
- Support for 4G modules
 

The LCB2K ships without a 4G module. Users have to purchase 4G modules separately if needed.

Network connection priority: Wired network > Wi-Fi network > 4G network When multiple types of networks are available, the LCB2K will choose a signal automatically according to the priority.

## Appearance

### Right View



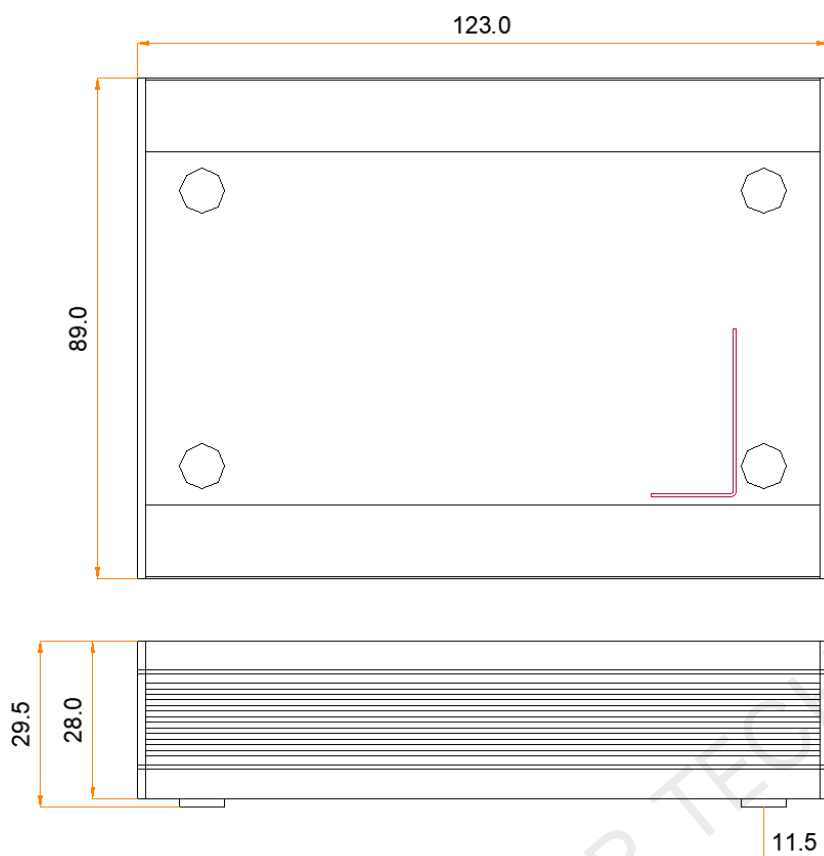
Name	Description
AUDIO OUT	Audio output connector
HDMI OUT	HDMI output
SIM CARD	SIM card slot Capable of preventing users from inserting a SIM card in the wrong orientation
PWR (red)	Power indicator Staying on: The power supply is working properly.
SYS (green)	System operation and Internet connection indicator <ul style="list-style-type: none"> <li>• Flashing once every 2s: The device is functioning normally.</li> <li>• Flashing once every 0.5s: The Internet connection is normal.</li> </ul>

Left View



Name	Description
WiFi	Wi-Fi AP antenna connector
RESET	Reset button Press and hold this button for 5 seconds to reset the product to its factory settings.
USB	USB (Type C) port Connects to the control computer for content publishing and screen control.
USB 3.0	USB 3.0 (Type A) port Allows for playback of content imported from a USB drive and firmware upgrade over USB. The Ext4 and FAT32 file systems are supported. The exFAT and FAT16 file systems are not supported.
ETHERNET	Fast Ethernet port Connects to the control computer, a LAN or public network for content publishing and screen control.
12V --- 2A	Power input connector

## Dimensions



Tolerance:  $\pm 0.3$  Unit: mm

## Specifications

Electrical Parameters	Input voltage	DC 12 V , 2 A
	Maximum power consumption	18 W
Storage Capacity	RAM	1 GB
	Internal storage	16 GB
Operating Environment	Temperature	-20°C to +60°C
	Humidity	0% RH to 80% RH, non-condensing
Storage Environment	Temperature	-40°C to +80°C
	Humidity	0% RH to 80% RH, non-condensing
Physical Specifications	Dimensions	123.0 mm × 89.0 mm × 29.5 mm
	Net weight	TBD

	Gross weight	TBD
Packing Information	Dimensions	278.0 mm × 63.0 mm × 221.0 mm
	Accessories	<ul style="list-style-type: none"> <li>• 1x Omnidirectional Wi-Fi antenna</li> <li>• 1x Power adapter</li> <li>• 1x Certificate of Approval</li> </ul>

The amount of power consumption may vary depending on various factors such as product settings, usage, and environment.

## Media Decoding Specifications

### Image

Category	Codec	Supported Image Size	File Format	Remarks
JPEG	JFIF file format 1.02	96×32 pixels to 817×8176 pixels	JPG, JPEG	No support for non-interlaced scan Support for SRGB JPEG Support for Adobe RGB JPEG
BMP	BMP	No Restriction	BMP	N/A
GIF	GIF	No Restriction	GIF	N/A
PNG	PNG	No Restriction	PNG	N/A
WEBP	WEBP	No Restriction	WEBP	N/A

### Video

Category	Codec	Resolution	Max Frame Rate	Max Bit Rate (Ideal Case)	File Format	Remarks
MPEG-1/2	MPEG-1/2	48×48 pixels to 1920×1088 pixels	30fps	80Mbps	DAT, MPG, VOB, TS	Support for field coding
MPEG-4	MPEG4	48×48 pixels to 1920×1088 pixels	30fps	38.4Mbps	AVI, MKV, MP4, MOV, 3GP	No support for MS MPEG4 v1/v2/v3, GMC

Category	Codec	Resolution	Max Frame Rate	Max Bit Rate (Ideal Case)	File Format	Remarks
H.264/AVC	H.264	48×48 pixels to 4096×2304 pixels	2304p@60fps	80Mbps	AVI, MKV, MP4, MOV, 3GP, TS, FLV	Support for field coding and MBAFF
MVC	H.264 MVC	48×48 pixels to 4096×2304 pixels	2304p@60fps	100Mbps	MKV, TS	Support for Stereo High Profile only
H.265/HEVC	H.265/HEVC	64×64 pixels to 4096×2304 pixels	2304p@60fps	100Mbps	MKV, MP4, MOV, TS	Support for Main Profile, Tile & Slice
GOOGLE VP8	VP8	48×48 pixels to 1920×1088 pixels	30fps	38.4Mbps	WEBM, MKV	N/A
GOOGLE VP9	VP9	64×64 pixels to 4096×2304 pixels	60fps	80Mbps	WEBM, MKV	N/A
H.263	H.263	SQCIF (128×96) QCIF (176×144) CIF (352×288) 4CIF (704×576)	30fps	38.4Mbps	3GP, MOV, MP4	No support for H.263+
VC-1	VC-1	48×48 pixels to 1920×1088 pixels	30fps	45Mbps	WMV, ASF, TS, MKV, AVI	N/A
MOTION JPEG	MJPEG	48×48 pixels to 1920×1088 pixels	60fps	60Mbps	AVI	N/A

**Copyright © 2023 Xi'an NovaStar Tech Co., Ltd. All Rights Reserved.**

No part of this document may be copied, reproduced, extracted or transmitted in any form or by any means without the prior written consent of Xi'an NovaStar Tech Co., Ltd.

**Trademark**

 is a trademark of Xi'an NovaStar Tech Co., Ltd.

**Statement**

Thank you for choosing NovaStar's product. This document is intended to help you understand and use the product. For accuracy and reliability, NovaStar may make improvements and/or changes to this document at any time and without notice. If you experience any problems in use or have any suggestions, please contact us via the contact information given in this document. We will do our best to solve any issues, as well as evaluate and implement any suggestions.

**Official website**  
[www.novastar.tech](http://www.novastar.tech)

**Technical support**  
[support@novastar.tech](mailto:support@novastar.tech)