

X400

Professional Media Server

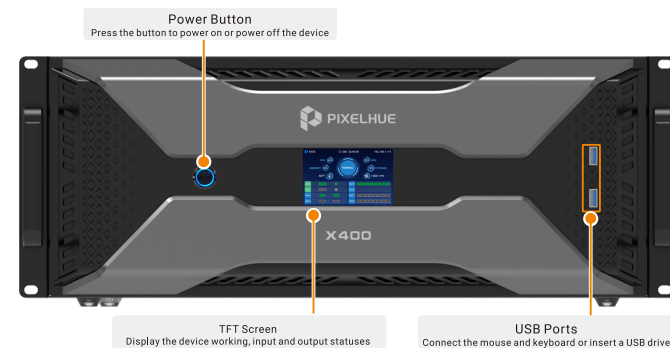
Copyright © 2023 Pixelhue Technology Ltd. All Rights Reserved.



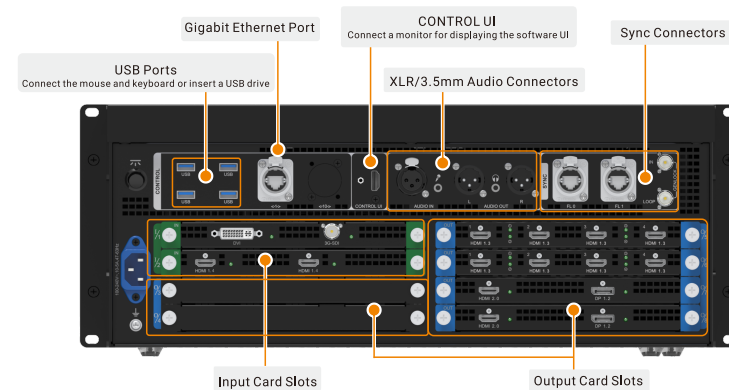
Quick Start Guide

Appearance

Front Panel



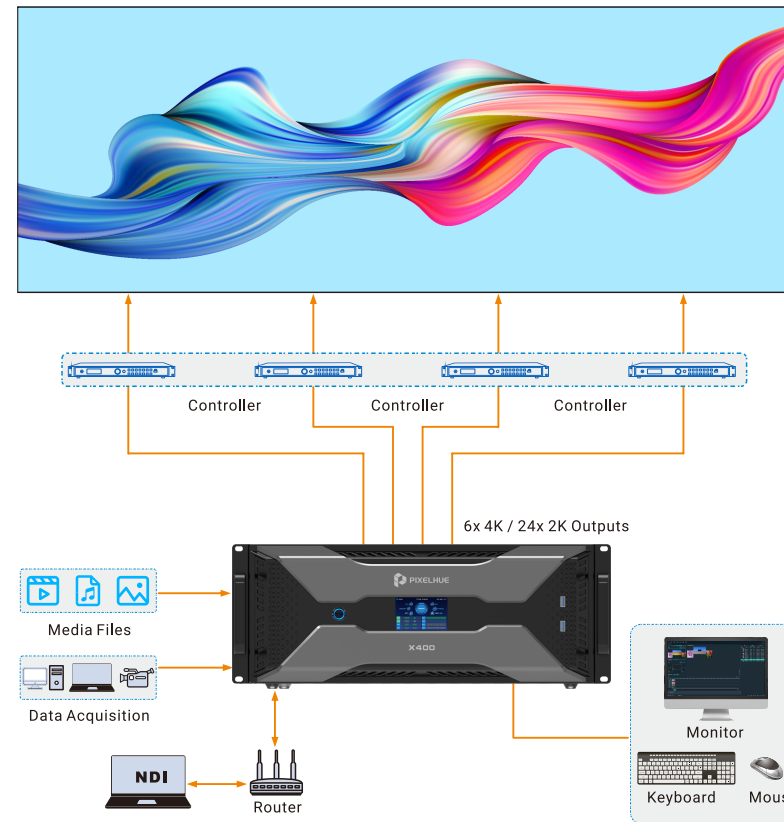
Rear Panel



* The product pictures shown in this guide are for illustration purpose only. Actual product may vary.
* The sync connectors may not be present for different device configurations.

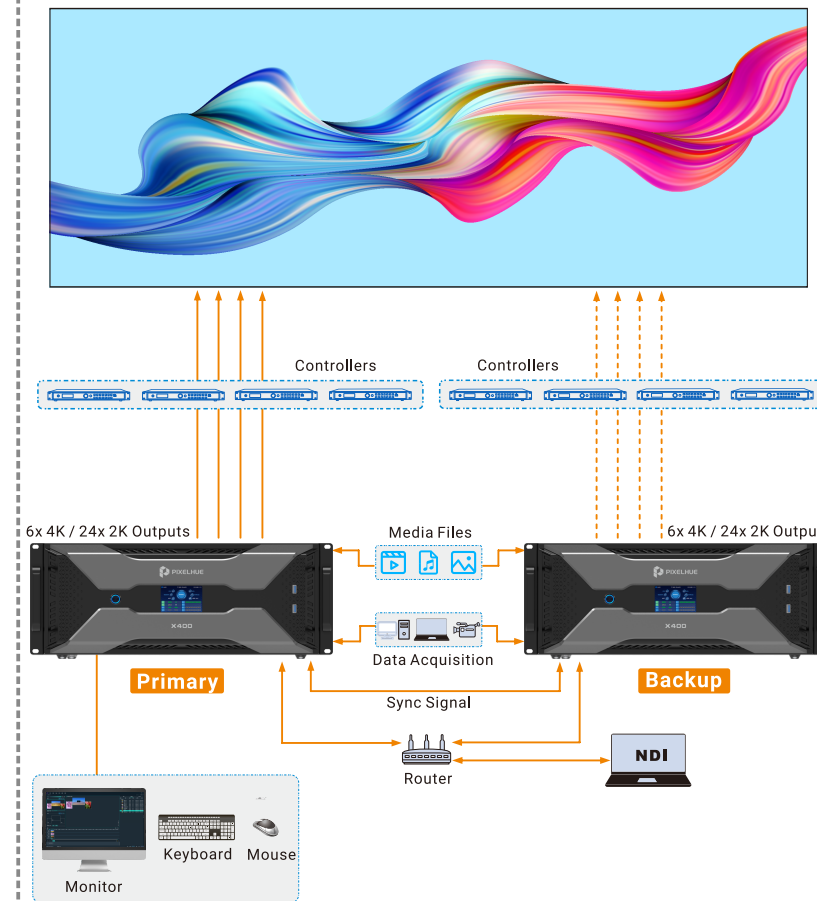
Applications

X400 Application - Single



X400 Application - Dual Redundant

If the dual redundant application is required, please select the device configuration with sync connectors.



Software Operations

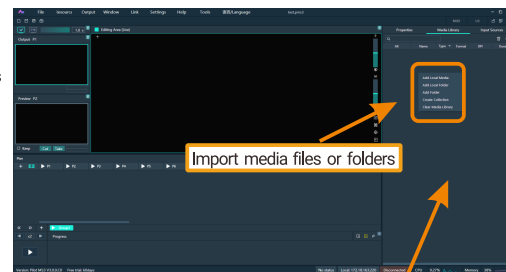
Pilot MS3 is the built-in multimedia playback software of the X400 media server, allowing you to perform a variety of operations, such as adding media files, configuring outputs, editing and playing programs.

Add Media Files or Input Sources

Import Media Files

Pilot MS3 supports batch importing of media files or folders via either of the following ways.

- Simply drag one or multiple media files or folders to the **Media Library** area.
- Right click the **Media Library** area and then select to import either a media file or folder.



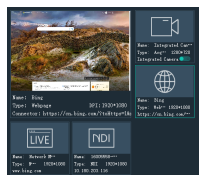
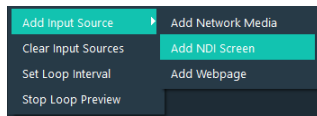
Drag media here

Add Input Sources

You can also add the network media, NDI screens, webpages and sources from acquisition devices.

Go to the **Input Sources** tab on the right pane and right click the blank area to add various inputs.

- Acquisition device: Pilot MS3 automatically detects and adds this kind of sources to the **Input Sources** list.
- Network media: Go to **Add Input Source > Add Network Media** to enter the desired URL in the popup window.



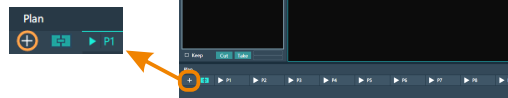
- NDI screen: Go to **Add Input Source > Add NDI Screen**. The system automatically searches for all the available NDI screens. Select the desired one and click **Save** to add the NDI screen.

- * Make sure you have configured the image area in the NDI Sender and enable the NDI function.
- Webpage: Go to **Add Input Source > Add Webpage** to enter the desired website in the address bar of the web page that appears.

Add Layers

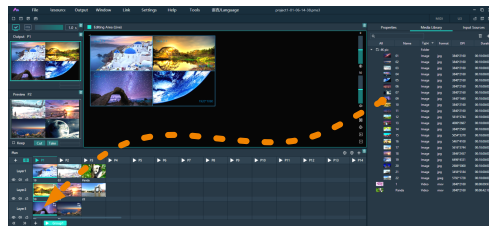
Add layers according to your actual requirements. Each layer of a program supports one media only.

On the software main user interface, click + in the **Plan** area to add layers.



Add Media Files

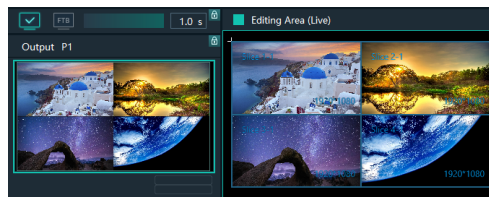
- Select the desired media files or inputs in the **Media Library** or **Input Sources** area.
- Click and drag the selected file or input to a layer of a program in the **Plan** area.



Adjust Outputs

In the editing area, you can quickly reposition and resize the output images.

- Click and drag a slice in the editing area to quickly reposition the output image.
- When a slice is selected, eight dots appear on the slice edges. Click and drag the dots to quickly resize the output image.



Note

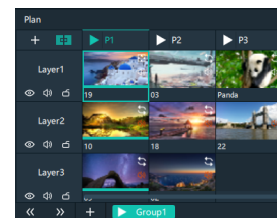
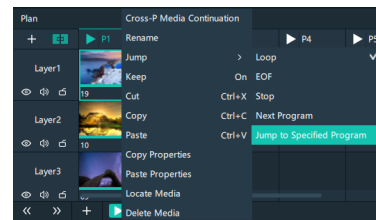
When a slice is selected, click the **Properties** tab on the right side and you can precisely adjust the slice position, size, rotation and priority.

Play Programs

Program Jump

Pilot MS3 supports jump playback of the programs. After a program is added, specify a certain media in the program as the timing base. When the playback of this media ends, the system can automatically jump to and play the specified program.

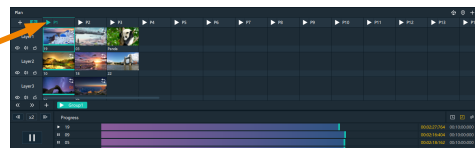
- Right click the desired media to open the context menu.
- Go to **Jump > Jump to Specified Program**.
- Select the target program to complete the jump settings.



Program Playback

After the program editing, click ▶ next to the program name to start the playback of the program.

The program being played



Playback Control

After the playback is started, the progress bar at the bottom indicates the playback status.

Adjust the fast-forward and rewind speed

Pause or play a single media

Pause or play all media in the current program

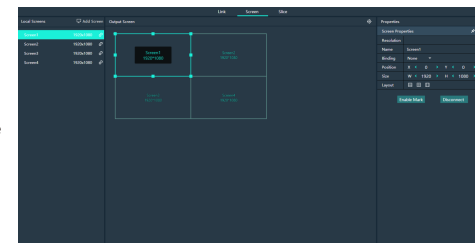
Configure Outputs

After startup, Pilot MS3 automatically detects the connection statuses of the output cards of the X400, and then binds the output connectors to the screens. All the screens are displayed in the screen list on the left of the **Output Management** window.

You can change the binding relations between the output connectors and screens via the **Binding** function on the **Output Management** window.

Change Screen Binding

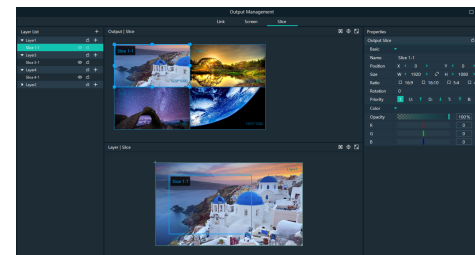
- On the main menu bar, click **Output** to open the **Output Management** window.
- Select the **Screen** tab and change the screen size and position as required.
- Select a screen, and then select the desired output from the drop-down list next to **Binding** according to the relations between the outputs and screens to complete the binding.



Edit Output Slices

Pilot MS3 supports slice output. If you want to output multiple images, slices are your ideal choice.

- Select the **Slice** tab on the **Output Management** window.
- Click + next to the layer name on the left side to add an output slice.
- In the **Output | Slice** area, select a slice and adjust its position and size on the screen.
- In the **Layer | Slice** area, click and drag a slice to adjust the position and size of the image to be output.



* The software pictures given in this guide are used for illustration purposes only. The actual user interface may vary slightly due to product enhancement. The content of the pictures can be slightly different from reality, such as the media files, form and position of software windows and more.

* The software pictures and descriptions in this guide are based on Pilot MS3 V3.0.0, which may vary with the actual product in your hand. For the latest software operation instructions, please visit our official website or contact the technical support to obtain the latest user manual.